

AMBER BASIC PC Remote Programmer Software

User Guide



Copyrights & Warranty

© Copyright 2008 by the manufacturer. All Rights Reserved.

No part of this publication may be reproduced or distributed in any form or by any means, electronic or mechanical, for any purpose, without the express written permission of the manufacturer.

Microsoft is a registered trademark of Microsoft Corp.

All other products or services referred to in this manual are the trademarks, service marks, or product names of their respective holders.

DISCLAIMER: The information, products and specifications, configurations, and other technical information regarding the products contained in this manual are subject to change without notice. All the statements, technical information, and recommendations contained in this manual are believed to be accurate and reliable but are presented without warranty of any kind, and users must take full responsibility for the application of any products specified in this manual.

IN NO EVENT SHALL THE MANUFACTURER OR ITS SUPPLIERS BE LIABLE FOR ANY INDIRECT, SPECIAL, CONSEQUENTIAL, OR INCIDENTAL DAMAGES, INCLUDING, WITHOUT LIMITATION, LOST PROFITS OR LOSS OR DAMAGE TO DATA ARISING OUT OF THE USE OR INABILITY TO USE THIS MANUAL, EVEN IF THE MANUFACTURER HAS BEEN ADVISED OF THE POSSIBILITY OF SUCH DAMAGES.

WARRANTY

The manufacturer and/or its subsidiaries and its affiliates ("the Manufacturer") warrants its products hereinafter referred to as "the Product" or "Products" to be in conformance with its own plans and specifications and to be free of defects in materials and workmanship under normal use and service for a period of 24 months from the date of shipment by the Manufacturer. The Manufacturer's obligations shall be limited within the warranty period, at its option, to repair or replace the product or any part thereof.

This warranty does not apply in the following cases: improper installation, misuse, failure to follow installation and operating instructions, alteration, abuse, accident or tampering.

This warranty is exclusive and expressly in lieu of all other warranties, obligations or liabilities, whether written, oral, express or implied, including any warranty of merchantability or fitness for a particular purpose, or otherwise. In no case shall the Manufacturer be liable to anyone for any consequential or incidental damages for breach of this warranty or any other warranties whatsoever, as aforesaid.

This warranty shall not be modified, varied or extended, and the Manufacturer does not authorize any person to act on its behalf in the modification, variation or extension of this warranty. This warranty shall apply to the Product only. All products, accessories or attachments of others used in conjunction with the Product, including batteries, shall be covered solely by their own warranty, if any.

The Manufacturer shall not be liable for any damage or loss whatsoever, whether directly, indirectly, incidentally, consequentially or otherwise, caused by the malfunction of the Product due to products, accessories, or attachments of others, including batteries, used in conjunction with the Products.

The Manufacturer does not represent that its Product may not be compromised and/or circumvented, or that the Product will prevent any death, personal and/or bodily injury and/or damage to property resulting from unauthorized entry, burglary, robbery, or otherwise, or that the Product will in all cases provide adequate warning or protection. User understands that a properly installed and maintained access control system may only reduce the risk of unauthorized entry without warning, but it is not insurance or a guarantee that such will not occur or that there will be no death, personal damage and/or damage to property as a result.

The Manufacturer shall have no liability for any death, personal and/or bodily injury and/or damage to property or other loss whether direct, indirect, incidental, consequential or otherwise, based on a claim that the Product failed to function. However, if the Manufacturer is held liable, whether directly or indirectly, for any loss or damage arising under this limited warranty or otherwise, regardless of cause or origin, the Manufacturer's maximum liability shall not in any case exceed the purchase price of the Product, which shall be fixed as liquidated damages and not as a penalty, and shall be the complete and exclusive remedy against the Manufacturer.

Document revision 08/2008

About This Manual

This manual provides a detailed description of the procedures for using the Amber Basic PC Remote Programmer with your Amber Basic system.

Chapter 1 provides an overview and briefly describes the system.

Chapter 2 lists the requirements for installing the software and describes the software installation process.

Chapter 3 covers the menus included in the software.

Chapter 4 introduces Sites and how they are managed (creating, saving, deleting and copying).

Chapter 5 explains how to manage Amber Basic PC Remote Programmer users, including how to add users, delete users, change a user's password and how to log in as a different user.

Chapter 6 details all the different tables displayed in the software and provides a general overview of what is included in them.

Chapter 7 describes how to edit text in the control panel LCD display.

Chapter 8 describes how to download/upload customized data settings.

Chapter 9 covers the Reports utility, detailing how to define and generate reports.

Chapter 10 describes how to change the screen appearance, change the screen color, column alignment and user interface language.

Chapter 11 provides answers to troubleshooting questions, which may occur.

Appendix A provides solutions in the event of characters not appearing correctly due to the interface language used and for custom language editing.

Formatting Conventions

The following formatting conventions are used throughout the documentation:

- Note:* Additional information relevant to the presently discussed subject.
- Caution:* Information that is essential for your safety and to avoid damaging the hardware or software.
- bold text** Indicates operations that you must perform (e.g., name of a button to be clicked or option to be selected) or to emphasize a field or concept being described.

Table of Contents

Chapter 1: Introduction

Chapter 2: Getting Started

2.1 Hardware/Software Requirements	2-1
2.2 Installation	2-1
2.3 Amber Basic PC Remote Programmer Main Window	2-3
2.4 Navigating Amber Basic PC Remote Programmer.....	2-6
2.5 Exiting Amber Basic PC Remote Programmer.....	2-6

Chapter 3: Menus

3.1 Sites Menu	3-1
3.2 Edit Menu	3-1
3.3 View Menu	3-1
3.4 Communications Menu.....	3-2
3.5 Advanced Menu.....	3-2
3.6 Help Menu	3-2

Chapter 4: Sites

4.1 Introduction to Sites.....	4-1
4.2 Creating a New Site	4-2
4.3 Saving a Site	4-8
4.4 Saving a Site File with a New Name	4-8
4.5 Displaying and Editing Existing Sites Files	4-8
4.6 Copying a Site.....	4-8
4.7 Deleting a Site.....	4-9
4.8 Exiting the Site List Window.....	4-9

Chapter 5: Users

5.1 Adding New Users.....	5-1
5.2 Deleting a User	5-1
5.3 Login as a Different User.....	5-2

Chapter 6: Data Table Details

6.1 Site Information	6-1
6.2 User Settings.....	6-2

6.3 Transmitters	6-2
6.4 Panel Definitions.....	6-2
6.5 Communications Definitions	6-3
6.6 Pendant test.....	6-5
6.7 Reminders	6-5
6.8 Event Log.....	6-6

Chapter 7: Connecting to the Amber Basic PC Remote Programmer Control Panel

7.1 Defining Communication Settings.....	7-1
7.2 Local Connection (Serial Port)	7-2
7.3 Remote Connection (Telephone Modem).....	7-3
7.4 Connecting to Amber Basic	7-5
7.5 Online Operations	7-5
7.6 Disconnecting from the Amber Basic.....	7-6

Chapter 8: Data

8.1 Defining Data Settings.....	8-1
---------------------------------	-----

Chapter 9: Reports

9.1 Defining and Generating a Report	9-1
9.2 Viewing a Report.....	9-2
9.3 Printing a Report.....	9-2

Chapter 10: Screen Appearance

10.1 Changing the Color.....	10-1
10.2 Column Alignment	10-2
10.3 User Interface Language.....	10-2

Chapter 11: Troubleshooting

Appendix A: Language Settings

Changing Language Settings in Windows 2000.....	A-1
Changing Language Settings in Windows XP.....	A-2

Chapter 1: Introduction

The Amber Basic PC Remote Programmer is a utility program that enables you to manage the Amber Basic control panel from a remote station. It runs on PC workstations with Microsoft® Windows 2000 or Windows XP.

It allows offline preparation of specifications, each of which is a set of parameters especially tailored for a particular Amber Basic PC Remote Programmer installation site. After the user has prepared the parameters for the site, they can be downloaded into the Amber Basic control panel on the site.

Data is transferred to and from the Amber Basic PC Remote Programmer either locally through an RS-232 serial data cable, as shown in figure 1-1, or remotely via telephone lines and a modem, as shown in figure 1-2. For local connection, connect the optional plug-in RS-232 module (PN 0-5924-0) to the connector of the Amber Basic control panel, and then connect the RS-232 cable to a local PC.

Local Data Transfer enables the operator to prepare the parameters for the Amber Basic control panel on a PC where the operator specifies parameters in the Site Screens, even though the operator is working at the same installation site. The operator then transfers the data to the control panel through a cable.

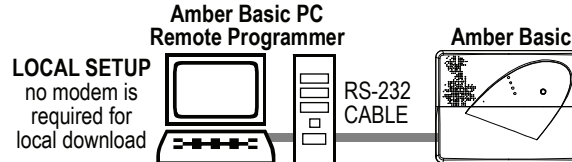


Figure 1-1: Setup for Local Data Transfer

Remote Data Transfer enables the operator to work from a remote site where several Amber Basic systems can be controlled at different installation sites. Using the Amber Basic PC Remote Programmer, the operator can compare the parameters of the different systems and copy them if necessary. The data is then transferred to each Amber Basic PC Remote Programmer through a modem.

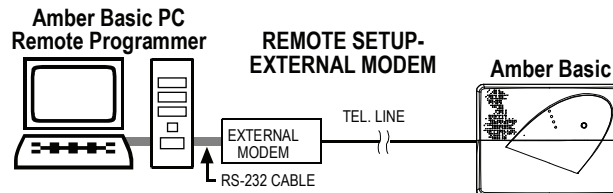


Figure 1-2: Setup for Remote Data Transfer with an External Modem

Note: An external modem is required. It is recommended to use the approved model, USR 5686 or USR 5633 from US Robotics.

Chapter 2: Getting Started

2.1 Hardware / Software Requirements

In order to run Amber Basic PC Remote Programmer, you need the following resources:

- PC workstation with Pentium microprocessor (100 MHz or higher)
- Microsoft Windows 2000 or Windows XP.
- 128 megabytes of RAM (minimum)
- Hard disk with at least 8 megabytes of free space.
- For best performance, use a display driver with a resolution of at least 1024 x 768 pixels.

2.2 Installation

Use an RS-232 cable to connect an external modem to one of the computer's COM ports as instructed in the manual supplied with the modem. Then connect the modem to the telephone line.

To Install the Modem

1. Install the modem for use with the remote computer.
2. Restart your computer. In most cases Windows will detect the new hardware and will open a dialog box prompting you to install the driver for the new modem (from the manufacturer's CD).

If Windows does not recognize the modem during startup, do the following:

3. From the **Start** menu, select **Settings**, then **Control Panel**; the control panel window appears.
4. Double-click the **Modems** icon; the Modem Properties dialog box appears.
*Note: In Windows XP the Modems icon is located under **Printers and other Hardware**.*
5. Click **Add**; the Install New Modem wizard begins. Follow the instructions to enable Windows detect and install the new modem.

To Install Amber Basic PC Remote Programmer

1. Start Windows. Close all running applications, if any.
2. Insert the Amber Basic PC Remote Programmer CD into the CD-ROM drive.

If your system includes the AutoPlay feature, the setup program starts automatically. Otherwise, proceed as follows:

3. From the **Start** menu, select **Run**; the Run dialog box appears.
4. In the Run edit box, type the drive letter of the CD drive you are using, followed by a colon, backslash, and the word “setup”, for example: "**d:\setup**".
5. Click **OK**. The installation welcome screen appears and the Installation program guides you through the entire process.
6. Click **Next**, then follow the instructions on your screen to complete the installation.

During installation an Amber Basic PC Remote Programmer shortcut icon is placed on the Desktop to enable you to start Amber Basic PC Remote Programmer easily.



To Start Amber Basic PC Remote Programmer

1. On the Windows Desktop, double-click on the **Amber Basic PC Remote Programmer** icon; the Login screen appears.

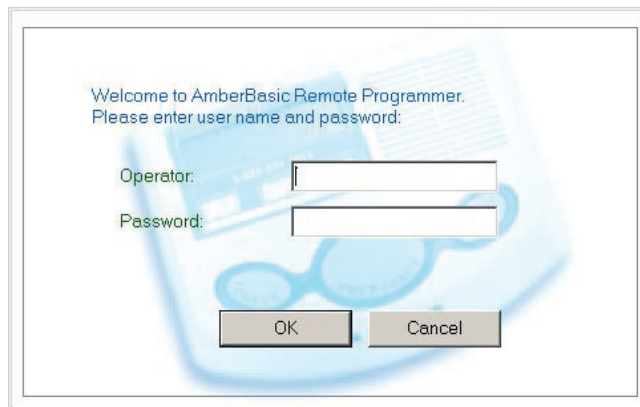


Figure 2-1: Login Screen

2. In the Operator edit box, enter your user name (visonic, by default).
 3. In the Password edit box, enter your password (amber, by default).
- Both entries are case-sensitive.

The main Amber Basic PC Remote Programmer screen appears with the Sites List in the foreground as the active window.

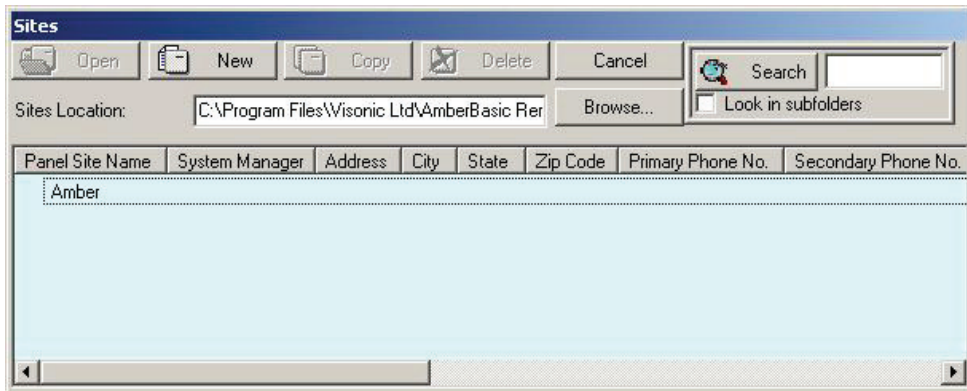


Figure 2-2: Site List Window

This window enables you: to open an existing site file; create a new site file; copy a site file; delete a site file or exit the program. Refer to “Chapter 4. Sites” for further details.

2.3 Amber Basic PC Remote Programmer Main Window

The Amber Basic PC Remote Programmer main window displays all the main features of Amber Basic PC Remote Programmer. This enables you to manage the Amber Basic control panel easily and efficiently.

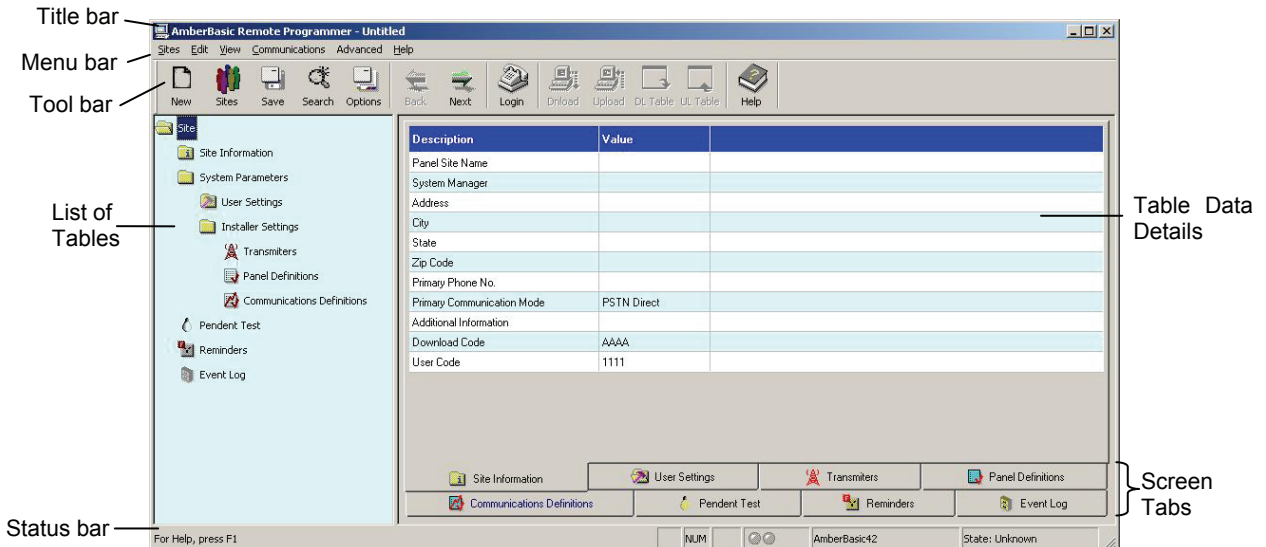


Figure 2-3: Amber Basic PC Remote Programmer Main Screen

Title Bar

The title bar displays the following features:

- The name of the Amber Basic PC Remote Programmer file that you have opened.

- The windows Minimize button.
- The windows Maximize button.
- The windows Close button.

Menu Bar

Displays the menus that enable you to access Amber Basic PC Remote Programmer features.

List of Tables

This area displays a list of all the data tables containing information which characterizes the site. As you point to each table title, it appears underlined. Click on a title to display that table data.




Table Data











This area contains detailed data included in the selected table.

Type in settings, or double-click on the down-pointing arrow to display a drop-down list, and select the appropriate value.

Toolbar

Amber Basic PC Remote Programmer provides a toolbar that displays buttons which are shortcuts to the most frequently used features of the system.

Button	Name	Function	Also accessible through menu
	New	Displays the New Sites window.	Sites
	Sites	Displays the Sites List window (including Site information).	Sites
	Save	Saves the site file displayed on the screen.	Sites

Button	Name	Function	Also accessible through menu
	Search	Displays the Sites window (without Site information).	View Sites
	Options	Displays the Options dialog box.	View
	Back	Displays the previous table according to the List of Tables.	View
	Next	Displays the next table according to the List of Tables.	View
	Login	Connects the Amber Basic PC Remote Programmer to the control panel.	Communications
	Download	Downloads data from the Amber Basic PC Remote Programmer to the control panel.	Communications
	Upload	Uploads data from the control panel to the Amber Basic PC Remote Programmer and automatically updates files.	Communications
	Download Table	Downloads data from the table currently visible on the screen to the control panel.	Communications
	Upload Table	Uploads data from the control panel to the table currently visible on the screen.	Communications
	Help	Displays the Amber Basic PC Remote Programmer Help files.	Help

Status Bar

The Status Bar appears at the bottom of the Amber Basic PC Remote Programmer screen. It displays the following:

- Menu name
- Caps lock
- Number lock
- Communication Status: The communication status is displayed by the color of the two communication status icons:

Program Status	Left Icon	Right Icon
Communication is offline	Gray	Gray
Communication is online	Dark green	Dark green
Downloading to control panel	Dark green	Light green
Uploading from control panel	Light green	Dark green

- Amber Basic model: Displays the Amber Basic model name.

2.4 Navigating Amber Basic PC Remote Programmer

You can move around the Amber Basic PC Remote Programmer screen and carry out functions in a variety of ways:

Mouse

Use the mouse to point to a position on the screen, then click the left mouse button. This enables you to do the following:

- Click a button.
- Select a table tab in the main screen.
- Place the cursor within a table edit box.
- Display a drop-down list.

Arrow and Tab keys

The arrow and tab keys enable you to move around the Amber Basic PC Remote Programmer tables and highlight the edit boxes. However, they do not position the cursor at the insertion point; this is performed using the mouse or by pressing Enter.

2.5 Exiting Amber Basic PC Remote Programmer

At any time, you can exit Amber Basic PC Remote Programmer.

To Exit the Program

1. From the **Sites** menu, select **Exit**. A popup message appears prompting you to save the recent changes to the system.
2. Click **Yes** to save or **No** to disregard recent changes. Amber Basic PC Remote Programmer closes.

Chapter 3: Menu

The Amber Basic PC Remote Programmer main screen displays six menus, which enable you to access the different features of the application.

3.1 Sites Menu

The Sites menu provides you with the tools to manage new and existing Sites.

Menu Item	Function
List of Sites...	Displays the Sites window (with Site information).
New Site	Displays the New Site window.
Search	Displays the Sites window (without Site information).
Save	Saves an existing Site file.
Save As...	Enables you to save a site file by a new name.
Close Site	Enables you to close the displayed Site.
Print...	Prints a report.
Print Preview	Displays the report on the screen before you print it.
Print Setup...	Enables you to determine the Print specifications.
Users	Enables you to manage users.
Exit	Exits Amber Basic PC Remote Programmer.

3.2 Edit Menu

The Edit menu contains commands that help you edit and fill in details in each screen.

Menu Item	Function
Cut	Removes selected text to the clipboard.
Copy	Copies selected text to the clipboard.
Paste	Places the text being held in the clipboard at the point of insertion.

3.3 View Menu

The View menu contains items that enable you to control the appearance of your Amber Basic PC Remote Programmer screen.

Menu Item	Function
Toolbar	Displays or hides the Tool bar

Menu Item	Function
Status Bar	Displays or hides the Status bar.
Next Table	Displays the next table of the List of Tables.
Previous Table	Displays the previous table of the List of Tables.
Messages Window	Displays the incoming and outgoing messages.
Options...	Displays the Options window.

3.4 Communications Menu

The Communications menu enables you to manage the Communication process with the control panel. All of these functions appear on the toolbar.

Menu Item	Function
Login	Begins the login/logout process to/from the control panel.
Update Login Data...	Enables updating the download and installer code when system is armed.
Download	Downloads data from the Amber Basic PC Remote Programmer to the control panel.
Upload	Uploads data from the control panel to the Amber Basic PC Remote Programmer.
Download Table	Downloads the currently displayed table from the Amber Basic PC Remote Programmer to the control panel.
Upload Table	Uploads the currently displayed table from the control panel to the Amber Basic PC Remote Programmer.
Change system Time & Date...	Sets the time and the date that will be downloaded to the control panel. This option is only enabled when the communication between the Amber Basic PC Remote Programmer and the control panel is enabled.
Update Time & Date On Logout	Automatically updates the control panel date and time when disconnecting from the control panel.
Port Auto Detection...	Automatically begins a search for the control panel that is connected by Serial Communication mode.
Settings	Enables you to specify communication settings by selecting options in the Communications tab of the Options dialog box.

3.5 Advanced Menu

The Utilities menu enables you to perform changes to the panel settings.

Menu Item	Function
Settings	Enables you to specify display settings by selecting options in the Display tab of the Options dialog box.

3.6 Help Menu

The Help menu enables you to receive information and guidance in managing Amber Basic PC Remote Programmer.

Menu Item	Function
About Amber Basic Remote Programmer...	Provides Amber Basic PC Remote Programmer copyright and version information. Click on the Home Health Care logo to display our Home Page, which contains important information about using Amber Basic PC Remote Programmer.

Chapter 4: Sites

4.1 Introduction to Sites

Amber Basic PC Remote Programmer enables you to manage Sites in a variety of ways. These features are accessible either from the menus or from the Site List window.

The Site List window is displayed either when the program is first initiated, or by clicking the Sites button in the tool bar or by selecting List of Sites in the Sites menu.

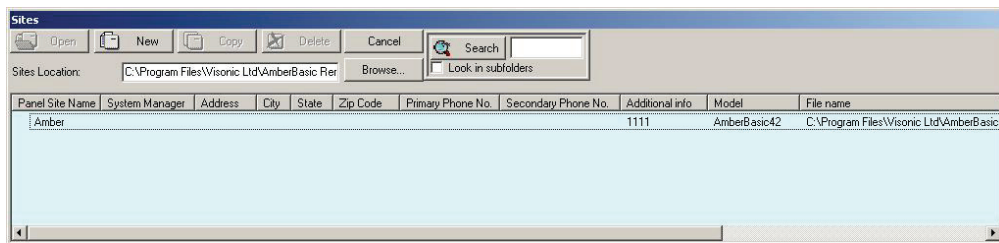


Figure 4-1: Site List Window

This window displays a list of the site names whose files are located in the directory displayed in the Sites Location field. The first time the program is initiated, the path displayed will be the path where the Amber Basic PC Remote Programmer is installed on your computer. In later sessions, the Sites Location field will display the path last chosen (either typed in or selected using the Browse button). Using the Browse button, it is possible to locate and access a site file anywhere in the network and not just access site files saved to your local computer.

Each column of the site list table can be sorted in either descending or ascending order by clicking on the column title. You can drag the vertical lines that separate the columns to enlarge or reduce the size of the columns.

The screen displays buttons, which enable you to begin working with Amber Basic PC Remote Programmer:

Button	Function
Open	Opens an existing Site
New	Opens a new Site
Copy	You can create a new site based on an existing similar site
Delete	Deletes a Site
Cancel	Closes the Site List Window.
Browse	Opens the Browse for Folder dialog box, which enables you to locate a folder where the Site files are located.

Button	Function
Search	Lists all the file names containing the text entered into the Search window. If "Look in sub directories" is not checked, the search will be performed only on Sites location (the root directory).

4.2 Creating a New Site

You can create a new, empty site file or you can copy an existing file, save it under a new name, and make the relevant changes to tailor it to a similar setup as the original. You can create a new site either via the Site List window or directly in the New Site window.

Click **New** in the Site List window,

or

In the **Sites** menu, click **New Site....**

The New Site dialog box appears.

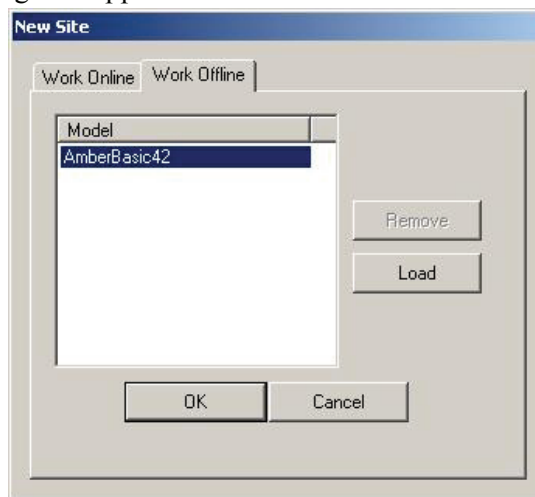


Figure 4-2: New Site Window - Work Offline

The New Site dialog box has two tabs:

Work Offline: Enables defining and changing parameters offline and at a later time downloading these parameters to the control panel.

Work Online: Enables direct operation with the control panel via a serial port or telephone modem.

By default the New Site dialog box opens with the Work Offline tab open to enable you to create the configuration file before the installation.

Working Offline

Work Offline only if you know the Amber Basic model you want to connect to.

1. Select the Work Offline tab. The following screen will be displayed:

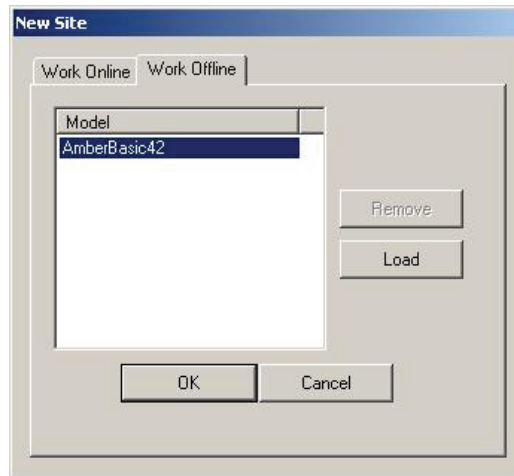


Figure 4-3: New Site Window - Work Offline

2. Select the Amber Basic model.
3. Click **OK**.

The Amber Basic PC Remote Programmer main screen will display the parameters relevant for the selected model.

Working Online

To work via a telephone modem

1. In the New Site window click **Options...**. The Options Communications window appears.

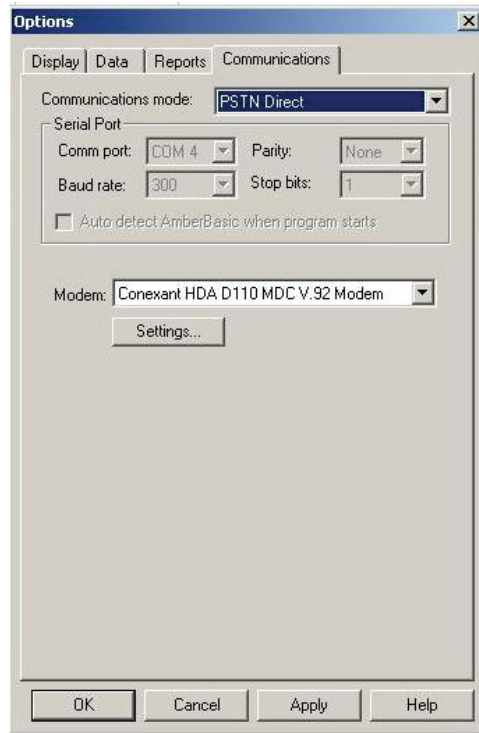


Figure 4-4: Options - Telephone Modem Communications Mode

2. Select **Telephone modem** in the **Communications mode** field.
3. Ensure that the correct modem is selected and configured.
4. Click **OK**.

The New Site window will appear displaying the Work Online tab with the Phone Number field and the Auto detection checkbox disabled.

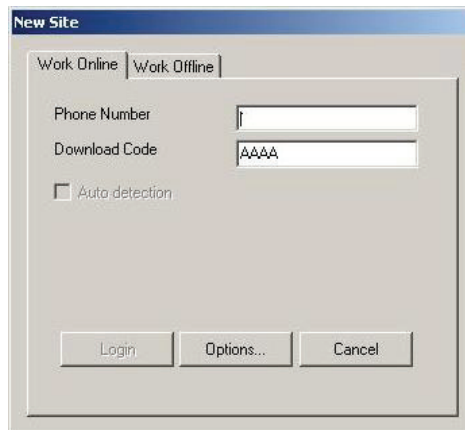


Figure 4-5: New Site Window - Telephone Modem Mode

5. Enter the phone number.
6. Enter the download code located in the control panel. The Login button and the Auto Detection checkbox will become enabled.
7. Check the **Auto Detection** checkbox if you want the program to automatically scan the computer ports to detect the presence of an Amber Basic PC Remote Programmer port.
8. Click **Login**. The **Modem Dial Up...** window will appear and attempt connecting.



Figure 4-6: Modem Dial Up

If you marked the Auto Detection checkbox, the program will start scanning the different ports to look for an Amber Basic PC Remote Programmer and will then connect to the Amber Basic PC Remote Programmer and verify the download code.

If you did not mark the auto detection checkbox, the program will try to connect to the Amber Basic PC Remote Programmer via the serial port defined in the Communications settings.

9. Click **Connect**. The **Hang Up** button becomes enabled.



Figure 4-7: Modem Hang Up

10. Wait for two or three rings, and then click the **Hang Up** button.



Figure 4-8: Communicating with PC

The system will wait for 12 seconds and then will automatically dial again. The Amber Basic will answer the call after the first ring and will initiate a data session with your PC.

To work via a serial port

1. In the New Site window click **Options...**. The Options Communications window appears.

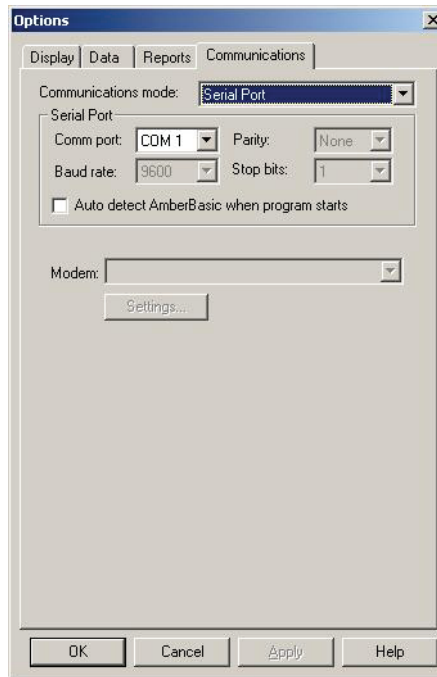


Figure 4-9: Options - Serial Port Communications Mode

2. Ensure that **Serial port** is selected in the **Communication mode** field and that the serial port details are correct (refer to chapter 7: Connecting to the Amber Basic Control Panel for further details).
3. Click **OK**.

The New Site window will appear displaying the Work Online tab with the Phone Number field disabled.



Figure 4-10: New Site Window - Work Online via a Serial Port

4. Click **Login**.

4.3 Saving a Site

From the **Sites** menu, select **Save**, or click the Save button on the toolbar; Amber Basic PC Remote Programmer automatically saves the site file on which you are working.

When you select Save or click the Save button for the first time after creating a new site file, Amber Basic PC Remote Programmer displays the Save As screen.

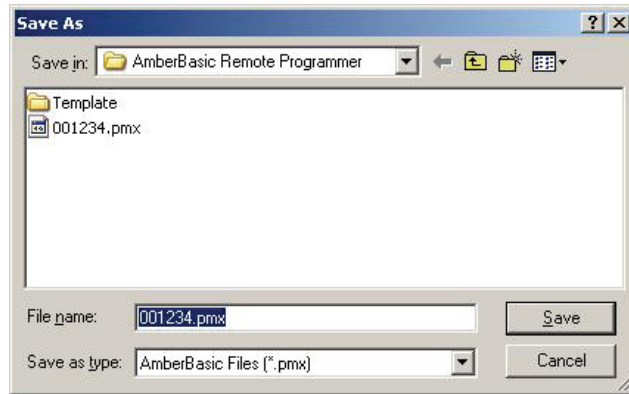


Figure 4-11: Save As... Screen

- **Save** – This is the directory in your computer that your Site will be saved in.
- **File name** – The name that the Site you are trying to save will be called.
- **Save as type** – This is the type of file that your Site will be saved as.

Do not change this, make sure that it is always left as AmberBasic Files (*.pmx)

- **Save** – The save button is what you press when you are done with the Save As box. This will complete the saving process.

It is recommended that you save every Site with the account number it was assigned. This will make it easy to locate and open saved Sites if they are needed in the future.

*Note: In the case where programming is performed by multiple workstations, it is recommended to save all *.pmx files in a shared network directory.*

4.4 Saving a Site File with a New Name

This enables you to save the site file with a new name and in a different directory.

1. From the **Sites** menu, select **Save As**; Amber Basic PC Remote Programmer displays the Save As screen.
2. Enter a suitable name for the new site and locate the directory where you want to save the file.

4.5 Displaying and Editing Existing Site Files

Once you have created a site, and saved it, you can view it at any time.

1. Either select the site from the recently used files in the Sites menu or select the site name to display in the Sites List window, and click **Open**.
2. The Amber Basic PC Remote Programmer main window displays the information of the selected site.
3. Edit the site tables as necessary.

4.6 Copying a Site

You can create a new site based on an existing similar site. This is done by copying an existing site file, saving it with a new name and then making and saving the necessary changes.

1. In the Site List window, select an existing site file.
2. Click **Copy**; an edit box appears prompting you for the name of the new site.
3. Type the new site name, then click **OK**.

The Amber Basic PC Remote Programmer main window appears and displays the details of the copied site.

4. Edit the site as necessary.
5. Click **Save** to save the site.

4.7 Deleting a Site

When a Site is no longer active, and it is no longer necessary to store it in Amber Basic PC Remote Programmer, you can delete it.

1. In the Sites List, select the site to delete, then click **Delete**, a warning box appears reminding you that any account that you delete is not retrievable.
2. Click **Yes** to delete the account, or **No** to return to the Sites List.

If you click Yes, the selected site is deleted and the Sites List is displayed.

4.8 Exiting the Site List Window

When you open Amber Basic PC Remote Programmer, the Sites List displays an Exit button. However, when you display the Sites List from within the application, the Exit button is replaced by a Cancel button.

Click **Exit** to exit Amber Basic PC Remote Programmer.

Click **Cancel**; the Sites List closes, and the main Amber Basic PC Remote Programmer screen becomes active.

Chapter 5: Users

From the Sites menu, select Users; Amber Basic RP Remote Programmer displays a menu that enables you to manage the Amber Basic RP Remote Programmer users.

Menu Item	Enables you to:
Add new user	Add a new user name and password.
Delete user	Delete a user.
Login as different user	Login as a different user without exiting Amber Basic RP Remote Programmer.

5.1 Adding New Users

1. From the **Sites** menu, select **Users**, then **Add new user...**; the Add new user dialog box will appear.



Figure 5-1: Add New User Dialog Box

2. In the **User Name** edit box, type the user's name.
3. In the **Password** edit box, type the user's password.
4. In the **Confirm Password** edit box, retype the user's password.
5. Click the **Access Level** drop-down arrow and select from the list your access level.
6. Click **Add**; a message box appears confirming the addition of the user to the system.

5.2 Deleting a User

1. From the **Sites** menu, select **Users**, then **Delete user...**; the Delete user dialog box will appear.



Figure 5-2: Deleting User Name Dialog Box

2. In the **User Name** edit box, type the user's name.
3. In the **Password** edit box, type the user's password.
4. Click **Delete**; a message box appears confirming the deletion of the user from the system.

5.3 Login as a Different User

1. From the **Sites** menu, select **Users**, then **Login as a different user...**; the Amber Basic RP Remote Programmer Login screen appears.

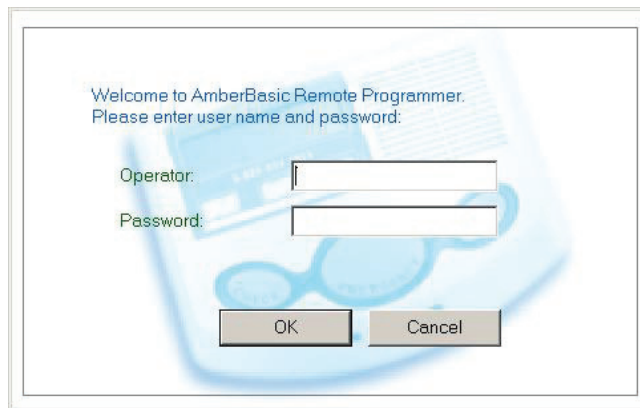


Figure 5-3: Login Screen

2. In the **User Name** edit box type the user's name and in the **Password edit** box type the user's password.
3. Click **OK**; a message will appear to notify that the password has been changed successfully.

Chapter 6: Data Table Details

The data tables' details display the parameters that can be uploaded from or downloaded to the Amber Basic control panel. When first creating a site file, the values displayed are default values, which can be altered to suit the specific system.

Use the arrow keys to navigate between the cells and focus on the different parameters, then click the left mouse button or press ENTER to edit the cell and change the values.

Amber Basic PC Remote Programmer includes the following tables:

- Site Information
- User Settings
- Transmitters
- Panel Definitions
- Communications Definitions
- Pendant Test
- Reminders
- Event Log

6.1 Site Information

This section provides various types of information on Amber Basic PC Remote Programmer sites, including site connection and location details.

Panel Site Name – The name of the site in which the control panel is installed.

System Manager – The name of the System Manager responsible for programming the control panel, and responding to alarm and to other events.

Address, City, State, and Zip Code – The complete address of the site.

Primary Phone No. – The telephone number which the Amber Basic PC Remote Programmer modem uses to connect to the control panel in the control station.

Primary Communication Mode – The mode of communication such as PSTN direct (POTS line) used to establish connection between the Amber Basic PC Remote Programmer and the control panel.

Additional Information - Additional important information about the Amber Basic PC Remote Programmer site and facilities.

Download Code – A 4-digit password used to enable downloading data into the control panel.

User Code (Remote Access Code) – A 4-digit password used to manage the control panel through the remote connection from a private telephone.

6.2 User Settings

User Settings enables you to define Amber Basic PC Remote Programmer settings, applicable to each individual site.

Last Upload System Time - The Amber Basic PC Remote Programmer system time when the last upload was received from the on-site control panel. The software application will update this field automatically.

Last Upload System Date - The Amber Basic PC Remote Programmer system date when the last upload was received from the on-site control panel. The software application will update this field automatically.

Panel Time-Date - The software will update this field automatically.

Time Format - You can adjust the control panel built-in clock to show the time in European format (hh:mm) or US format (hh:mm AM/PM).

Date Format - You can adjust the control panel built-in calendar date to show the date in European format (dd/mm/yyyy) or US format (mm-dd-yyyy).

6.3 Transmitters

This feature enables you to enroll RF devices.

Zone #: Lists zones in numerical order.

Type – Click the drop-down arrow and select from the list the relevant device type. Options: Non-alarm, Emergency, Flood, Gas, 24 Hours, Fire, Fall Detector, Pills Dispenser.

Enrolled – Notifies whether or not the device is enrolled.

RF ID # – Transmission ID number.

Name – Displays the name of the device.

6.4 Panel Definitions

Panel Definition enables you to customize the control panel to suit each individual user.

Supervision Interval – Determines the time interval for reception of supervision reports from supervised wireless devices. If any device does not report at least once within the selected time limit, an "INACTIVITY" alert will be initiated. Options: 1 Hour, 2 Hours, 4 Hours, 8 Hours, 12 Hours or Disable.

No Activity Time - Determines the time limit for reception of signals from sensors used to monitor the activity of the sick, elderly, or handicapped. If no device detects and reports movement at least once within the defined time limit, a 'not-active' alert will be initiated. Options: 3 Hours, 6 Hours, 12 Hours, 24 Hours, 48 Hours, 72 Hours or Disable.

6.5 Communications Definitions

Communications Definitions enables you to set the telephone communication parameters to the requirements of the particular Site.

Autotest Time – The time interval between consecutive tests of the telephone line. Options: 1 day, 5 days, 7 days, 30 days or Disabled.

Autotest cycle – The time interval between consecutive telephone line test messages sent to the central station. The control panel performs this at regular intervals to verify proper communications. Options: 1 Day, 5 Days, 7 Days, 30 Days or Disabled.

Area Code – The system tel. area code (up to 4 digits).

Out Access Number – The number that is used as a prefix to access an outside telephone line (if exists).

Central Station Emergency Tel. No. – The telephone number of the central station (including area code, 16 digit max) to which the Amber Basic PC Remote Programmer will report events.

Emergency Report Account No. – The number that will identify your specific alarm control system to the central station. The number consists of 6 hexadecimal digits

Central Station Maintenance/Alarm Tel. No. – The telephone number of the central station (including area code, 16 digit max) to which the Amber Basic PC Remote Programmer will report alarm and non-alarm events.

Report Format – The format by which the control panel will report events to central stations. Options: Contact ID, SIA, 4X2 1900/1400, 4X2 1800/2300 or Scancom.

4/2 Pulse Rate – The pulse rate at which Amber Basic PC Remote Programmer will send data to central stations, if any of the 4x2 formats has been selected. Options: 10 pps, 20 pps, 33 pps or 40 pps.

Send 2wv Code – Here you determine whether the Amber Basic PC Remote Programmer will send two-way voice code to the central station (to switch the central station from data communication to voice communication state) by using pre-selected SIA or Contact-ID communication formats only. Options: Send or Don't Send.

Voice Session - Central Stations – Opens a two-way voice session with the central station. Options: Enable or Disable.

Ringback Time – Here you determine the period during which the central station can establish 2-way voice communication with the Amber Basic PC Remote Programmer (after 1 ring), if an alarm type message was received by central station or the Ringback function was selected. Options: 1 minute, 3 minutes, 5 minutes or 10 minutes.

Central Station Dialing Attempts – You can either enable or disable the voice prompts and messages sent to the central station.

1st Private Tel. No. – You type the number of the first private telephone to which the system will report events.

2nd Private Tel. No. – You type the number of the second private telephone to which the system will report events.

3rd Private Tel. No. – You type the number of the third private telephone to which the system will report events.

4th Private Tel No. – You type the number of the fourth private telephone to which the system will report events.

Voice Session - Private Phones – You can either enable or disable the voice prompts and messages sent to private phones. Options: Enable or Disable.

Private Telephone Dialing Attempts – The number of attempts that Amber Basic PC Remote Programmer will make to establish communication with private telephone subscribers. Options: 1 attempt, 2 attempts, 3 attempts or 4 attempts.

Reporting to Private Telephones – The events that Amber Basic PC Remote Programmer will report to private telephone numbers. Alerts and Disable Report.

Private Telephone Acknowledge – The private telephone report acknowledge mode. There are two modes:

Single Acknowledge - When the Control Panel receives an acknowledge signal from one private telephone subscriber, it considers the current event closed. The remaining acknowledge signals are for backup purposes only.

All Acknowledge - The Control Panel must receive an acknowledge signal from all private telephone subscribers in order to consider the current event closed.

Remote Access – Determines permission to access and modify the Control Panel from a remote telephone. Options: On and Off.

Dialing Method – The dialing method used by the Amber Basic PC Remote Programmer automatic dialer. Options: Tone (DTMF) and Pulse.

Line Failure Report – Here you determine if the telephone line disconnection will be reported or not and determine the delay between detection of line disconnection and the failure reporting. If the telephone line is disconnected, the message "tel line fail" will be stored in the event log. Options: Don't Report, Immediately, 5 Minutes, 30 Minutes, 60 Minutes or 180 Minutes.

Ambient Level – In this section you select the ambient noise level of the installation. If it is relatively noisy environment, set it to High Level (default setting). If it is very quiet environment, set to Low Level.

6.6 Pendant Test

The pendant test Scheduler enables you to perform regular test procedures of enrolled pendants. The Scheduler enables you to determine start and stop test settings for the applicable pendants. You can select the day (Sunday, Monday, Tuesday, Wednesday, Thursday, Friday, Saturday, or daily) and then select the scheduled start/stop times for the test to be performed on the applicable pendant.

Pendent Test ,Scheduler

	#1 Start	#1 Stop	#2 Start	#2 Stop	#3 Start	#3 Stop	#4 Start	#4 Stop
Daily	???	???	???	???	???	???	???	???
Sunday	07:50	08:20	???	???	???	???	???	???
Monday	???	???	???	???	???	???	???	???
Tuesday	???	???	???	???	???	???	???	???
Wednesday	???	???	???	???	???	???	???	???
Thursday	17:00	17:30	???	???	???	???	???	???
Friday	???	???	???	???	???	???	???	???
Saturday	???	???	???	???	???	???	???	???

Delete OK

Figure 6-1: Pendant Test Scheduler

6.7 Reminders

This feature enables you to set programmable reminders per day. The reminder is announced by a voice message and also appears on the Amber Basic LCD display.

Reminder Schedule – Enables you to set a recurring reminder: daily; weekly; monthly; or yearly.

Reminder Type - Select one of the following reminder options:

- **Wake Up**
- **Wellness**
- **Health test**
- **Medication**

Caution: When setting reminders for more than one reminder type, the reminder Start time of each subsequent reminder type must be set to a minimum of 10 minutes after the previous reminder Stop time. For example, if the **Stop** time for the Medication reminder is set to 10:20, the **Start** time for the Wake Up reminder must be set to not before 10:30.

Reminders Scheduler - Device: 2								
	#1 Start	#1 Stop	#2 Start	#2 Stop	#3 Start	#3 Stop	#4 Start	#4 Stop
Daily	12:00	12:30	??	??	??	??	??	??
Sunday	??	??	??	??	??	??	??	??
Monday	??	??	??	??	??	??	??	??
Tuesday	??	??	??	??	??	??	??	??
Wednesday	??	??	??	??	??	??	??	??
Thursday	??	??	??	??	??	??	??	??
Friday	??	??	??	??	??	??	??	??
Saturday	??	??	??	??	??	??	??	??

Figure 6-2: Reminders Scheduler

6.8 Event Log

The Amber Basic maintains a log file of the last 250 events. The event log can be uploaded to the Amber Basic PC Remote Programmer.

Event # – Lists events in numerical order.

Zone/User # – Displays the wireless device number or zero “0” for a system event with the user number.

Event Type – Type of event.

Date and Time – Displays the date and time of the event.

To upload the event log table

1. Perform login.
2. Select the Event Log table.
3. Click the Upload Table icon on the toolbar

The Amber Basic PC Remote Programmer uploads all events in the table. A log file can contain up to 250 events in FIFO format (first-in, first-out), whereby new events overwrite the oldest events.

Chapter 7: Connecting to the Amber Basic Control Panel

Connecting to the Amber Basic control panel enables the Amber Basic PC Remote Programmer to transfer information to and from the control panel. The control panel can be connected by remote connection (via telephone modem), used when the operator specifies the parameters off-site, or by local connection (via RS-232), used when the installer uses a PC to specify the parameters on-site.

Once connected, it is possible to perform a number of operations, such as, uploading site parameters, downloading site parameters or changing system date and time.

7.1 Defining Communication Settings

The Communications dialog box enables you to determine the communication settings through which the Amber Basic PC Remote Programmer and the control panel communicate.

From the **View** menu, select **Options**, and then click on the **Communications** tab; the Communications dialog box appears.

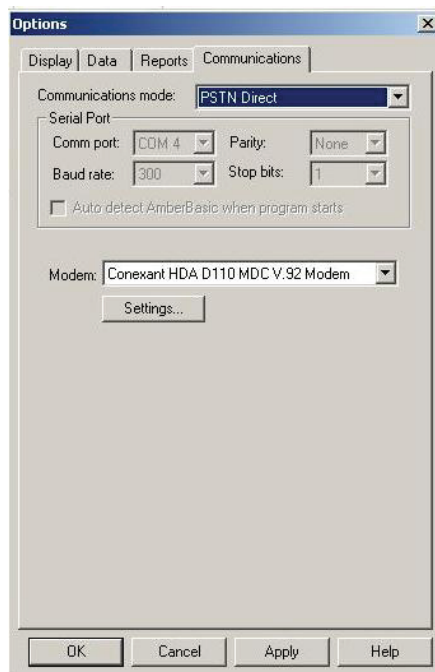


Figure 7-1: Options - Communications Tab

7.2 Local Connection (Serial Port)

Local connection is used when the Amber Basic PC Remote Programmer is within direct cable connection distance from the Amber Basic control panel. When using the Local Connection option there is no need for a modem. Only communication ports without installed modem drivers may be used in Serial mode. For example, if the modem drivers are installed on the ports COM2 and COM3, then only ports COM1 and COM4 may be used for connection in Serial mode.

1. From the **Communications mode** drop-down list, select **Serial Port**. The serial port parameters are displayed as follows:
 - The **Comm port** field becomes enabled.
 - The **Baud rate** field displays 9600, this being the baud rate used for serial connection. The **Baud rate** field is disabled.
 - The **Parity** and the **Stop bits** fields do not change and are disabled.

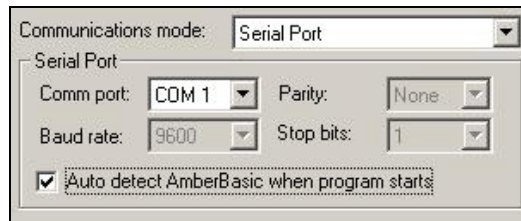


Figure 7-2: Communications Mode - Serial Port

2. Change the **Comm port** field as necessary.
3. **Auto-Detection Option:** Check the **Auto detect AmberBasic when program starts** checkbox, so that when starting the program, the system will automatically search for the control panel connected to the communication port.

*Note: The auto-detection option can also be activated by selecting **Port Auto Detection** from the Communications menu or by checking the relevant checkbox in the New Site dialog box.*

4. Click **OK**.

Note: When the auto detection procedure is initiated, either when starting the program or when choosing this option in the Communication menu or New Site dialog box, the following screen will appear, showing you the names of the ports being scanned.

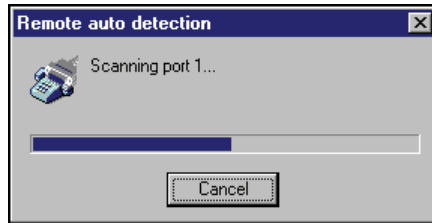


Figure 7-3: Progress Bar

7.3 Remote Connection (Telephone Modem)

This is applicable when using a dial-up (PSTN direct) connection to the Amber Basic.

1. From the **Communications mode** drop-down list, select **Telephone Modem**. The telephone modem section becomes enabled, and the serial port parameters change automatically to be displayed as follows:
 - The **Comm port** field becomes disabled and the field value is the communications port where the modem is connected.
 - The **Baud rate** field displays 300, the baud rate used for telephone modem connection.
 - The **Parity** and the **Stop bits** fields do not change and are disabled.

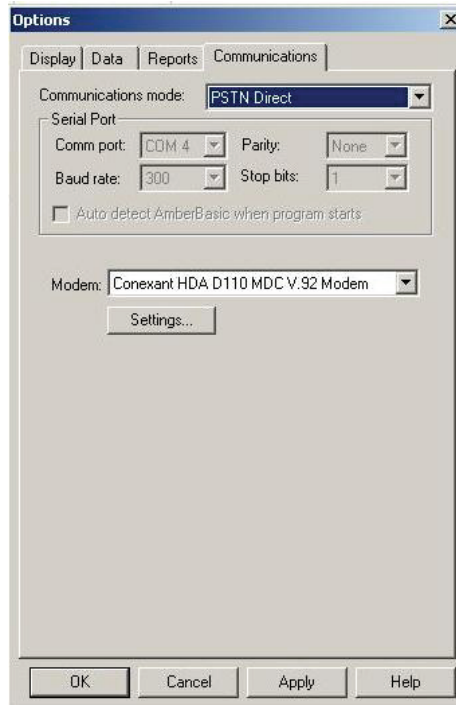


Figure 7-4: Communications Mode – Telephone Modem

2. In the **Modem** section of the dialog box, select from the **Modem** drop-down list, the modem to use for connecting to the control panel.
3. Click **Settings** to display the Modem Settings dialog box, and define the dialing and modem parameters.

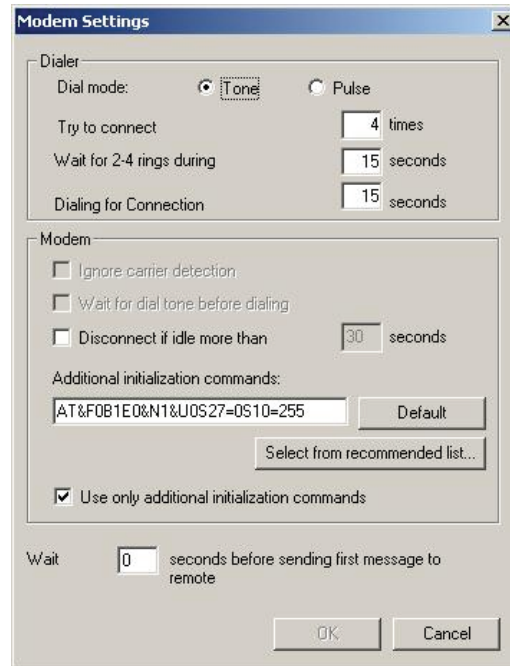


Figure 7-5: Modem Settings

4. To connect to the Amber Basic modem, the local software performs a Ring-Hang up-Ring procedure:

Step 1: Ring – dials, waiting for 2-4 rings (in the Dialer field of the **Modem Settings** dialog box enter value in Wait for 2-4 Rings During, see Figure 7-5 above) and then disconnects the line.

Step 2: Hang up – waits for a period of time (in the Dialer field of the **Modem Settings** dialog box enter value in Dialing for Connection, see Figure 7-5 above).

Step 3: Ring – dials to the unit for the second time. If the Ring-Hang up-Ring procedure succeeds, then the modem session starts.

The **Try to connect** field defines the number of times the Ring-Hang up-Ring procedure should be initiated. The **Wait for 2-4 rings during** field defines the Ring steps duration as follows:

1. In the 1st step duration the ring time differs depending on the phone service provider used, meaning that the overall time may be affected by the physical distance.
2. In the 2nd step duration, modems take different periods of time to synchronize and be connected.

The **Dialing for Connection** field defines the second step time-out which must be set between a 7-30 seconds time interval.

7.4 Connecting to Amber Basic

The login procedure enables Amber Basic PC Remote Programmer to transfer information to and from the control panel and can be initiated either when creating a new site file or when a site file is already open. This procedure differs when the communications mode is set to **Serial Port** or **Telephone Modem**: during a local communication, the Ring-Hang up-Ring procedure described above does not occur.

7.5 Online Operations

While connected to the Amber Basic, it is possible to perform a number of different operations. You can transfer information between the Amber Basic PC Remote Programmer and the control panel by uploading or downloading either all site parameters or a specific table. It is also possible to update the system date and time.

To Download or Upload from All Site Parameters

From the Communications menu, select **Download** or **Upload**,

Or

Click the appropriate icon on the toolbar.

The system begins to transfer data between the control panel and the Amber Basic PC Remote Programmer. The wording on the message box changes according to whether the transfer is Download or Upload.



Figure 7-6: Uploading/Downloading Progress Bar Screen

At any point during the transfer, you can click Cancel to halt the procedure.

When the transfer is complete, a message box appears to confirm successful completion.

To Download or Upload a Specific Table

1. Select a table by clicking on a table name in the List of Tables area, or by clicking a table tab at the bottom of the screen.
2. From the Communications menu, select Download or Upload, or click the appropriate icon on the toolbar.

7.6 Disconnecting from the Amber Basic

From the **Communications** menu, select **Logout**,

Or

Click the Logout icon on the toolbar.

Chapter 8: Data

The data tab is used to define specific upload/download settings to facilitate data transfer.

8.1 Defining Data Settings

The Data dialog box enables you to customize specific data settings in the upload/download process.

From the **View** menu, select **Options**, and then click on the **Data** tab; the Data dialog box appears.

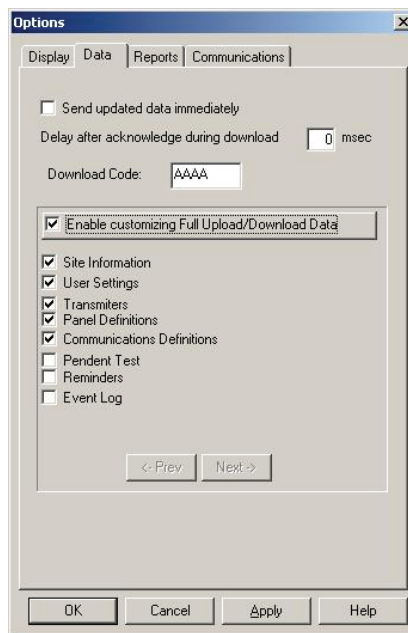


Figure 8-1: Options – Data Tab

1. Check the **Send updated data immediately** checkbox, to automatically update changed settings from the Amber Basic PC Remote Programmer to the Amber Basic.

Note: If the above field is not checked, the Amber Basic will only be updated when performing full download.

2. In the **Delay after acknowledge during download** box, enter a time value (in milliseconds) for a delay in sending commands.

Note: Delay after acknowledge during download should be used only when problems in communication are experienced.

3. Check the **Enable customizing Full Upload/Download Data** field, to enable uploading/downloading of customized settings.

Mark the relevant check boxes to specify the data to be uploaded to the Amber Basic control panel.

Attention: Use the same customized fields for both uploading and downloading in order to prevent inconsistency in the data.

Note: Click the **Next/Prev** buttons to see all the available fields.

4. Click **Apply**; the Amber Basic PC Remote Programmer submits to memory the updated data. The Options dialog box remains on the screen for further perusal and selection
5. Click **OK**; Amber Basic PC Remote Programmer updates the system according to your specifications.

Chapter 9: Reports

After you have created a site, you can generate a printable report of the site data. To generate a report, first define the information to include in the report, preview the report and then print it.

9.1 Defining and Generating a Report

Each Amber Basic PC Remote Programmer account comprises of 7 tables. You can generate a report including information about some or all of these details. After you specify which details you require in the report, Amber Basic PC Remote Programmer will generate the report.

To Define and Generate a Report

1. From the **View** menu, select **Options**, or
Click the **Options** button on the toolbar; the Options dialog box appears.
2. Click the Reports tab; the Reports dialog box appears.

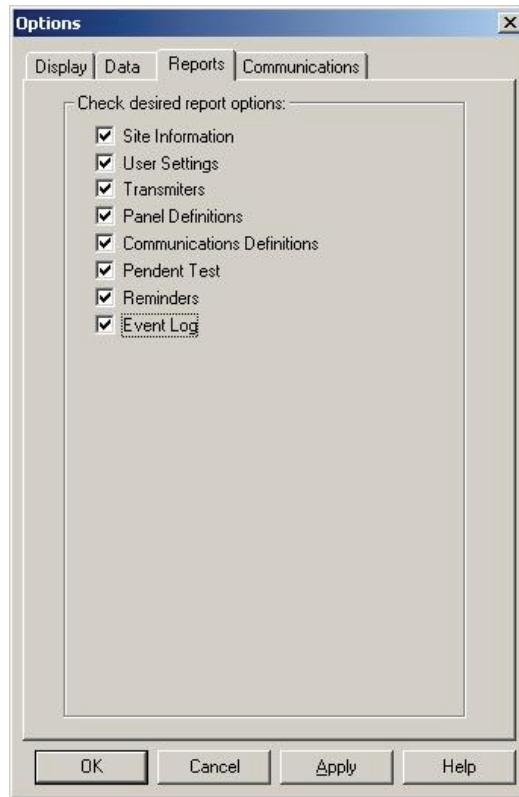


Figure 9-1: Options – Reports

Mark the relevant check boxes to specify the information to include in the Report.

3. Click **Apply**; the tables to include in the report are selected, and the Reports dialog box remains on the screen for further perusal and selection.
4. Click **OK**; Amber Basic PC Remote Programmer generates the report according to your specifications.

9.2 Viewing a Report

Amber Basic PC Remote Programmer enables you to view reports before you print them. This enables you to check that you have included all the necessary information in the report.

To View a Report

From the **Sites** menu, select **Print Preview**.

Amber Basic PC Remote Programmer displays the report of the site on the screen as you have specified for printing in the Options dialog box. This enables you to view the different details of the report before you print it.

The Print Preview toolbar enables you to do the following:

Print	Prints the report from the Print Preview screen.
Next Page	Displays the following page of the report.
Prev Page	Displays the previous page of the report.
First Page	Displays the first page of the report on the screen.
Last Page	Displays the last page of the report on the screen.
Whole Page	Displays one page of the report on the screen.
Page Width	Fits the page to the width of the window.
Two Pages	Displays two pages of the report on the screen.
Thumbnail	Opens a navigation pane of thumbnails of each report.
Zoom	Increases the size of the report as it appears on the screen. There are five possible view sizes available.

9.3 Printing a Report

You can change the print setup for a report. This enables you to determine the following:

- The printer to print the report.
- The paper size on which to print.
- The source from which the printer should take paper.
- The orientation of the paper.

To Determine the Print Setup

1. From the **Sites** menu, select **Print Setup**; the Print Setup dialog box appears.
2. Specify the printer to where the report will be printed.
3. Specify the paper size of the paper on which the report will be printed.
4. Specify the paper source.
5. Specify the orientation of the paper.
6. Click **OK**. The window is closed.

To Print a Report

1. From the **Sites** menu, select **Print** (or click the **Print** button on the toolbar); Amber Basic PC Remote Programmer displays the Print screen.

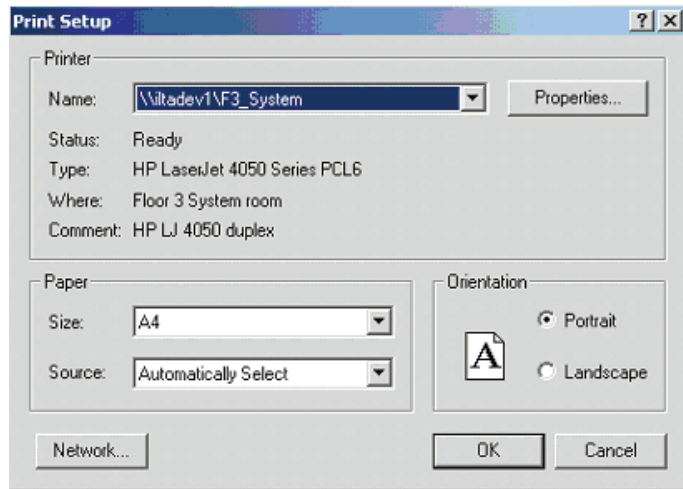


Figure 9-2: Print Dialog Box

This screen enables you to do the following:

- Select the printer to print the report.
 - Determine the print range.
 - Determine the number of copies of the report, and whether or not they should be collated.
2. Make the appropriate changes, and then click **OK**; Amber Basic PC Remote Programmer prints the report.

Chapter 10: Screen Appearance

Any changes to the appearance of the Site screens are made in the Display tab of the Options dialog box.

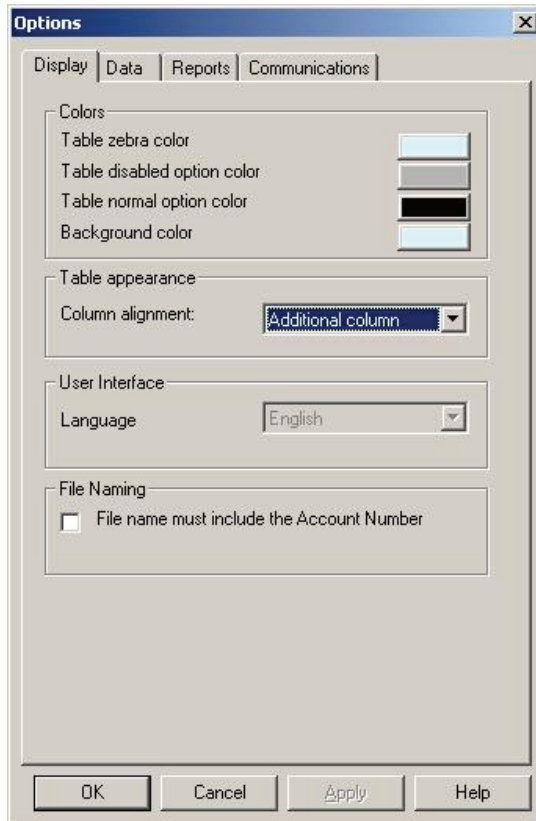


Figure 10-1: Options - Display Tab

10.1 Changing the Color

The colors of the Table Details are defined according to the following settings:

- Table zebra color: Defines the color of every other line in each table. This makes it easier for the user to follow the horizontal lines in the table.
- Table disabled option color: Disabled tables appear in the selected shade.
- Table normal option color: The color of the text as you type it.
- Background color: The background color of the tables list and the sites list.

To Change the Tables Color

1. From the **View** menu, select **Options**; the Options dialog box appears. By default, the Display tab is active.
2. Click on the block of Tables zebra color; the color palette appears.
3. Select a color, then click **OK**.
4. Repeat the procedure for all the options.
5. Restart Amber Basic PC Remote Programmer.

10.2 Column Alignment

Amber Basic PC Remote Programmer defines the Table Details column alignment according to one of the following settings: The Tables Column Alignment determines the width of the table columns on the screen.

- No auto alignment: All columns in the tables are the same width, regardless of their contents.
- Right justified: The columns in the table are all widened in order to cover the entire screen.
- Last column stretched: The last column in the table reaches the right side of the screen, however wide the contents of the column.
- Additional column: An additional column is added to the tables that are too narrow to fill the screen. The extra column is the width of the empty space between the last column of the table, and the right side of the screen.

To Change the Tables Column Alignment

Click the column alignment drop-down arrow, then select an option from the list.

10.3 User Interface Language

Amber Basic PC Remote Programmer provides you with the possibility to change the language used in the software interface.

To Change the User Interface Language

1. Click the Language User Interface language drop-down arrow, then select a language from the list.
2. Restart Amber Basic PC Remote Programmer.

10.4 File Naming

File naming provides you with the option to include the account number in the file name.

To Include the Account Number in the File Name

1. In the File Naming section; check the **File name must include the Account Number** check box.
2. Click **OK**.

11. Troubleshooting

PROBLEM	DIAGNOSIS	POSSIBLE SOLUTION
<p>A. The Amber Basic PC Remote Programmer doesn't identify the modem</p>	<p>A1. Your modem might be OFF or loosely connected.</p>	<p>A1. Make sure the modem is turned ON. A power switch is available on any external modem. The light on the front panel should illuminate.</p> <p>Also ensure that all other applications using the COM Port are turned off (PalmPilot Hotsync and other accessories or terminal windows).</p> <p>Check whether the cable connectors are fitted securely to their respective ports:</p> <ul style="list-style-type: none"> • The line connector in case of an internal modem • The line and RS-232 connectors in case of an external modem.
	<p>A2. You may have a COM/IRQ conflict.</p>	<p>A2. Check whether you have the correct Com port and IRQ settings in your software and/or in the Windows Control Panel. Also verify that there are no conflicts with other devices.</p> <p><i>(See section 2.2 for further details)</i></p>
<p>B. Failure to communicate with the Amber Basic via the modem.</p>	<p>B1. You may have a conflict with the definitions in the communication mode window.</p>	<p>B1. Make sure you selected the Telephone Modem option in the communication mode window.</p>
	<p>B2. The modem type is different from the type displayed in the OPTIONS menu / Communications tab.</p>	<p>B2. Check that the correct modem type has been selected.</p>
	<p>B3. Modem is not properly installed in operating system (Windows).</p>	<p>B3. Make sure that the modem is recognized by Windows.</p> <p>If not, click Start → Setting → Control Panel. Double click the Modems icon and follow the instructions on the displayed Install New Modem window.</p>

PROBLEM	DIAGNOSIS	POSSIBLE SOLUTION
	B4. Amber Basic is not connected to the phone line.	B4. Verify proper connection of the Amber Basic to the phone line. <i>(See section 7.3 for further details)</i>
C. PC fails to communicate with the Amber Basic via the Serial Port.	C1. The RS-232 cable is disconnected from the Com Port of your PC.	C1. Verify proper connection of the RS-232 cable.
	C2. You may have a definition conflict in the OPTIONS menu/ Communications settings	C2. Make sure that the Serial Port option is currently selected.
	C3. Your serial port is defined to work with a higher or lower baud rate.	C3. Make sure that the modem speed is set to 9600 bps in the OPTIONS menu / Communications.
	C4. You may have a COM Conflict.	C4. Verify that the correct Comm Port is specified in the OPTIONS menu / Communications <i>(See section 7.2 for further details)</i>

Appendix A: Language Settings

When using the Amber Basic PC Remote Programmer Software in Windows 2000/XP with a foreign language interface, some characters may not appear correctly in the chosen language. This may require changing the language settings.

Changing Language Settings in Windows 2000

1. From Start>Settings>Control Panel double-click Regional Options. The Regional Options dialog box appears.

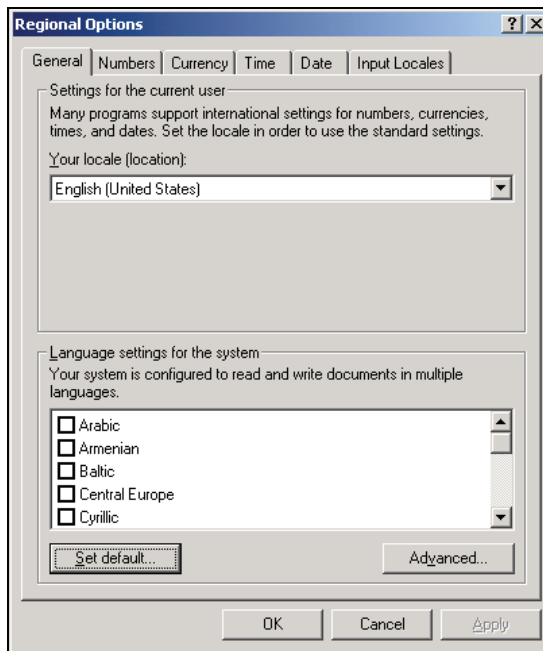


Figure A-1: Regional Options Window

2. Click **Set Default**; the Select System Locale dialog box appears.

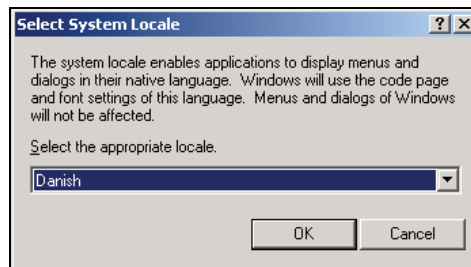


Figure A-2: Select System Locale Window

3. Click the drop-down list and select the appropriate language.

4. Click **OK**.
5. Restart the computer.

Changing Language Settings in Windows XP

1. From Start>Settings>Control Panel double-click Regional and Language Options. The Regional and Language Options dialog box appears.

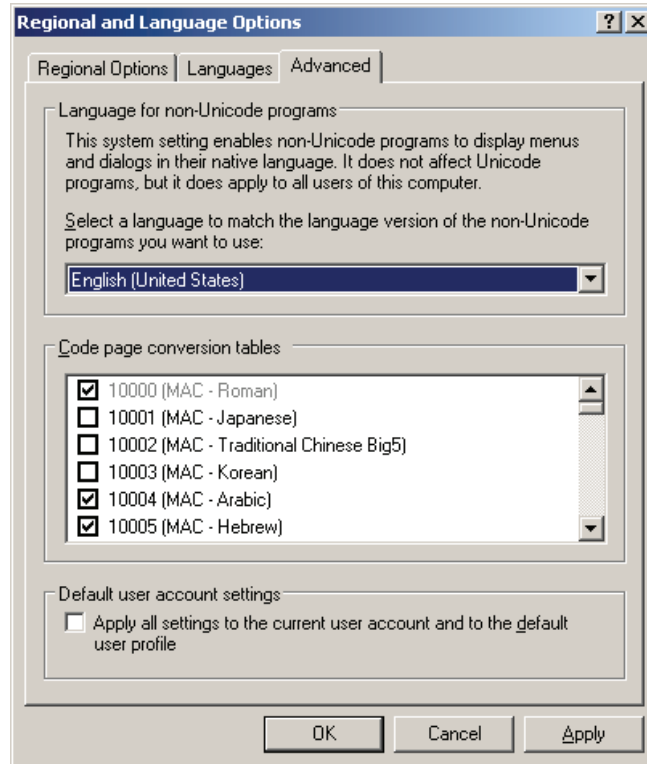


Figure A-3: Regional and Language Options Window

2. Click on the **Advanced** tab.
3. Under **Language for non-Unicode programs**, click the drop-down list and select the appropriate language.
4. Click **OK**.
5. Restart the computer.

Index

- Adding New Users, 5-1
- Advanced Menu, 3-4
- Amber Basic PC Remote
 - Programmer Main Window, 2-3
- Auto Detect 4-4, 4-5, 7-2
- Color, of Tables
 - changing, 10-2
- Column Alignment
 - changing, 10-3
- Communication Settings, 7-2
- Communications Definitions, 6-4
- Communications Menu, 3-3
- Connecting, 7-4
 - login, 4-5
 - via serial port, 7-3
- Copying
 - site, 4-9
- Creating
 - site, 4-3
- Data
 - Enable Customizing Full Upload/Download Data, 8-3
- Defining Data Settings, 8-2
- Delete
 - site, 4-9
- Deleting a User, 5-2
- Disconnecting from Amber Basic PC Remote Programmer, 7-9
- Download
 - all site parameters, 7-7
- Edit Menu, 3-2
- Event Log, 6-7
- Exiting Amber Basic PC Remote Programmer, 2-7
- Hardware / Software Requirements, 2-1
- Help Menu, 3-4
- Installation, 2-1
 - general, 2-1
 - modem, 2-1
 - software, 2-1
- Language, changing, 10-4
- List of Tables, 2-4
- Local Connection, 7-3
- Local Data Transfer, 1-1
- Login
 - Amber Basic PC Remote Programmer, 4-5, 4-8, 7-7
- Login as a Different User, 5-2
- Main Screen
 - general description, 2-3
 - list of tables, 2-4
 - menu bar, 2-4
 - status bar, 2-6
 - table data, 2-4
 - title bar, 2-4
 - toolbar, 2-4
- Menu
 - communications, 3-3
 - edit, 3-2
 - help, 3-4
 - sites, 3-2
 - view, 3-2
- Menu Bar, 2-4

- Modems
 - failing to communicate with, 11-2
 - installing, 2-1
 - problems identifying, 11-2
 - settings, 7-5
- Navigating Amber Basic PC Remote Programmer, 2-6
 - arrow keys, 2-7
 - mouse, 2-7
- Online Operations, 7-7
- Opening Existing Site, 4-9
- Panel Definitions, 6-3
- Panel Definitions Screen, 6-4, 6-6
- Pendant Test, 6-6
- Print Setup, 9-4
- Reminders, 6-6
- Remote Connection, 7-4
- Remote Data Transfer with an External Modem, 1-1
- Reports, 9-3
 - generating, 9-2
 - print setup, 9-4
 - printing, 9-4
 - viewing, 9-3
- Requirements
 - hardware/software, 2-1
- Saving
 - existing site, 4-9
 - new site, 4-8
- Serial Port, 7-3
- Serial Ports
 - failing to communicate with, 11-3
- Site Information, 6-2
- Site Information Screen, 6-2
- Sites
 - copying, 4-9
 - creating new, 4-3
 - displaying & editing, 4-9
 - displaying list of, 4-2
 - exiting window, 4-10
 - menu, 3-2
 - saving existing, 4-9
 - saving new, 4-8
 - window, 4-2
- Sites Menu, 3-2
- Software
 - exiting, 2-7
 - installing, 2-1
 - requirements, 2-1
- Status Bar, 2-6
- Table Data, 2-4
- Table Details, 6-2
- Table Names
 - event log, 6-7
 - panel definitions, 6-3, 6-4, 6-6
 - Reminders, 6-6
 - site information, 6-2
 - user settings, 6-3
 - User Settings, 6-3
- Telephone modem, connecting via, 4-3
- Telephone Modem, connecting via, 7-4
- Title Bar, 2-4
- Toolbar, 2-4
- Transmitters, 6-3
- Troubleshooting, 11-2
 - modem communication, 11-2
 - modem identification, 11-2
 - serial port communication failure, 11-3
- Upload

all site parameters, 7-7

User

add, 5-1

delete, 5-1, 5-2

login as different, 5-1, 5-2

settings screen, 6-3

User Interface

changing user interface

language, 10-3

User Settings, 6-3

View Menu, 3-2

VISIONIC LTD. (ISRAEL): P.O.B 22020 TEL-AVIV 61220 ISRAEL. PHONE: (972-3) 645-6789, FAX: (972-3) 645-6788

VISIONIC INC. (U.S.A.): 65 WEST DUDLEY TOWN ROAD, BLOOMFIELD CT. 06002-1376. PHONE: (860) 243-0833, (800) 223-0020 FAX: (860) 242-8094

VISIONIC LTD. (UK): 7 COPPERHOUSE COURT, CALDECOTTE, MILTON KEYNES. MK7 8NL. PHONE: (0870) 7300800 FAX: (0870) 7300801

INTERNET: WWW.VISIONIC.COM

